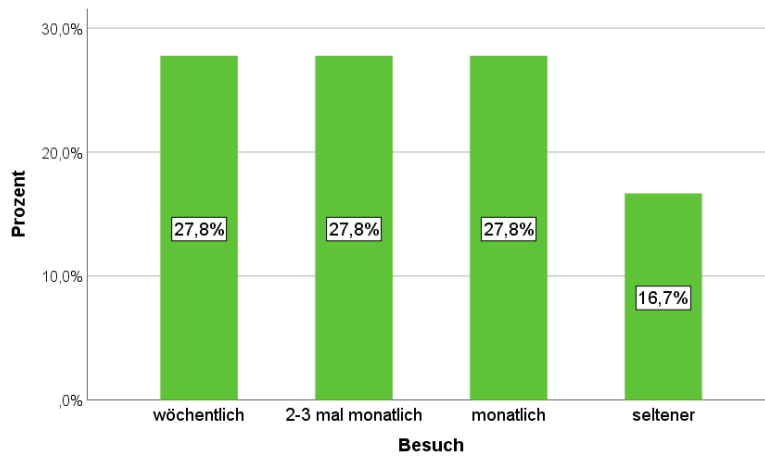


Statistische Auswertung der Bücherei Umfrage von 2020 (27 Zettel)

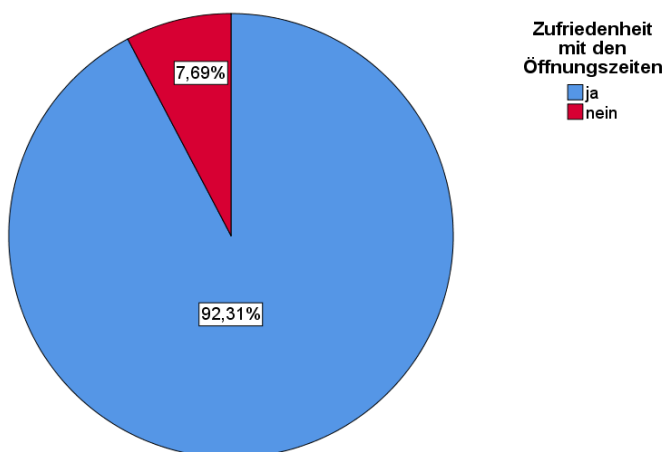
1. Häufigkeit der Besuche



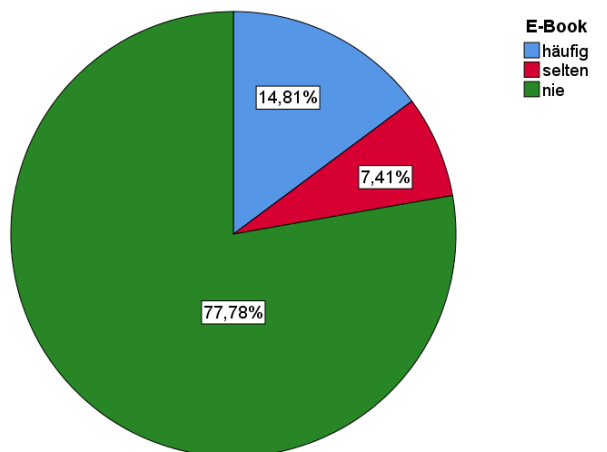
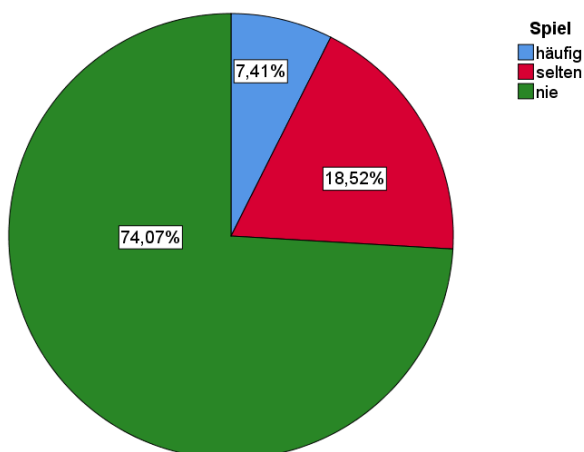
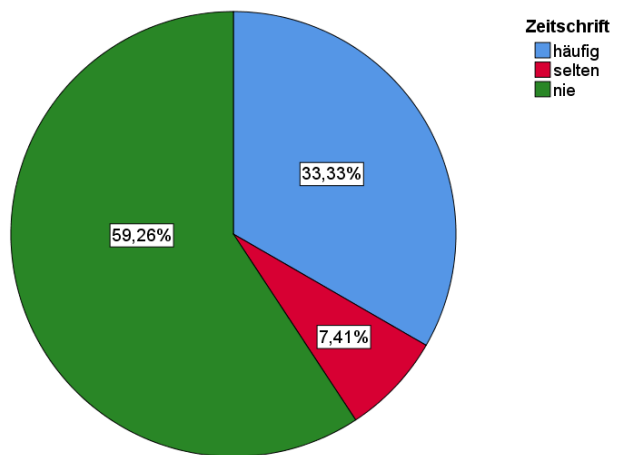
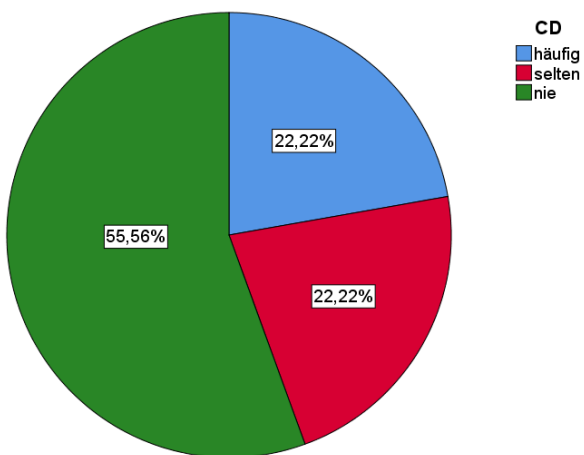
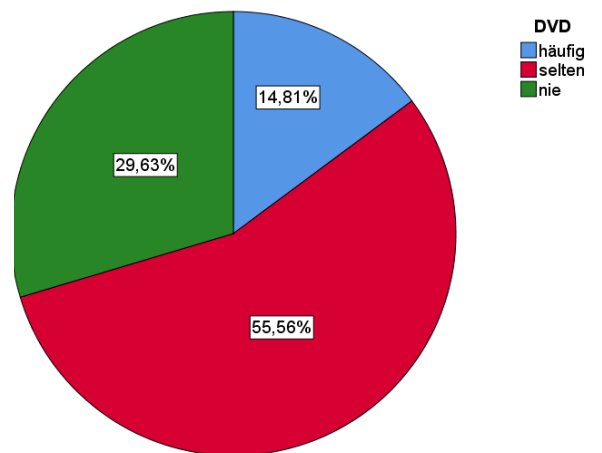
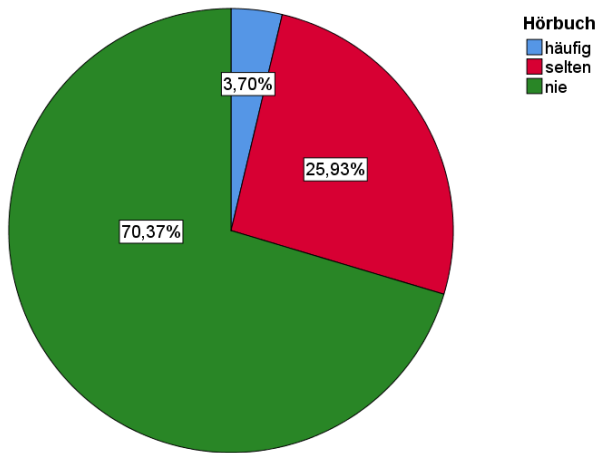
2. Alter/ Geschlecht/Einzelperson oder Familie

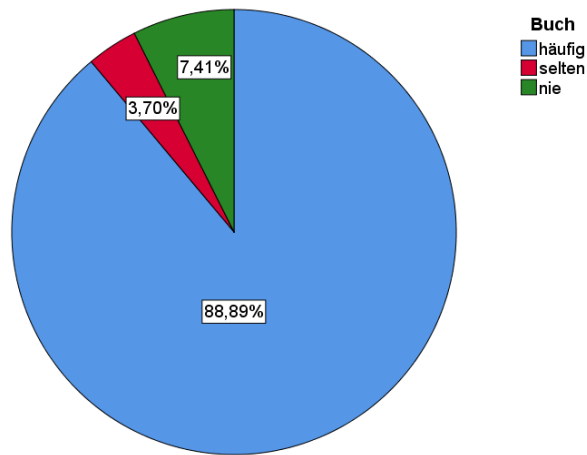
Zettel ausgefüllt haben Besucher zwischen 10 und 83 Jahren, zu 70% weiblich, zu 63% als Familie (Alter und Geschlecht hier nicht berücksichtigt)

3. Zufriedenheit mit den Öffnungszeiten

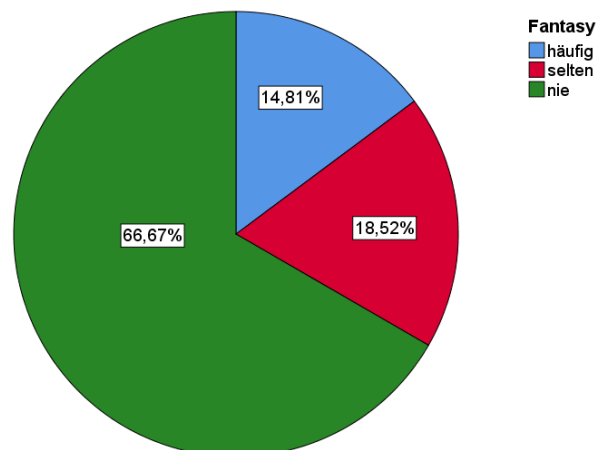
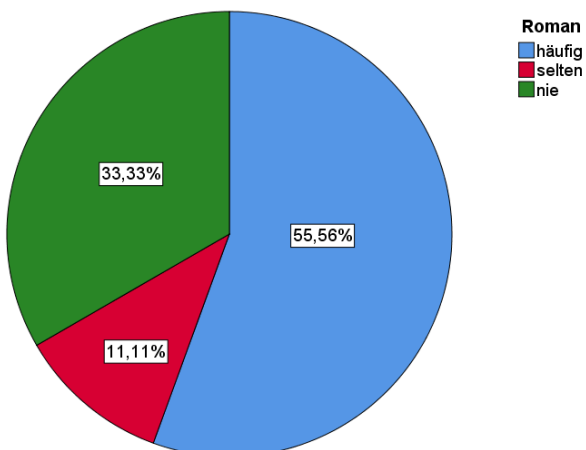
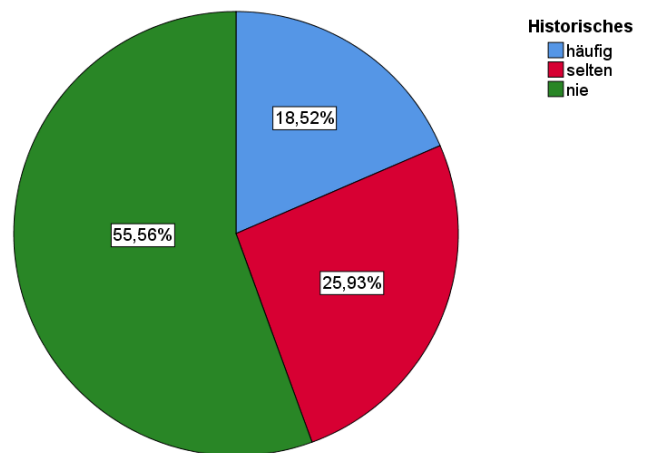
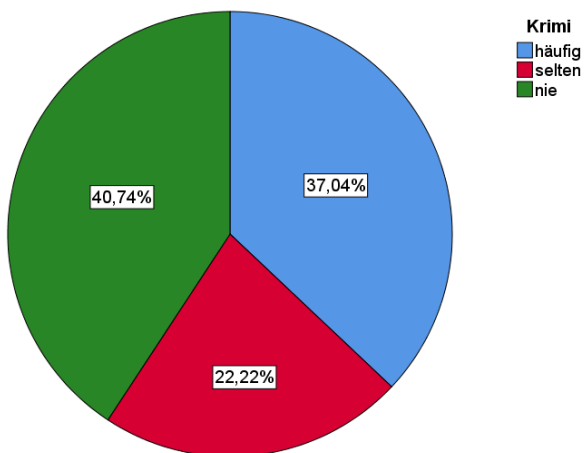


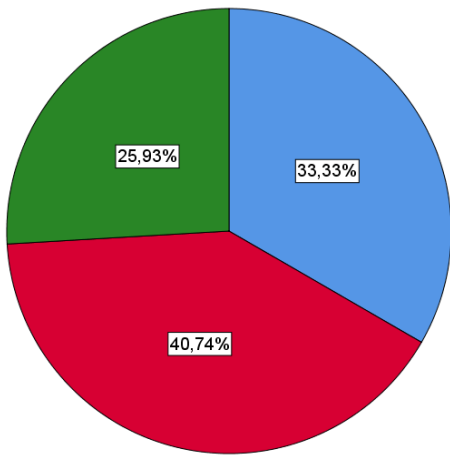
4. Häufigkeit der Ausleihungen einzelner Medien



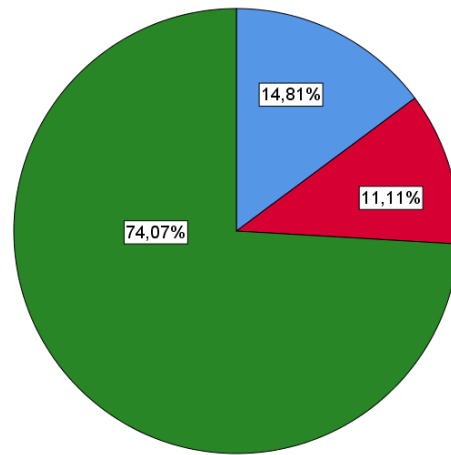


5. Häufigkeit der Ausleihungen verschiedener Buch Genre

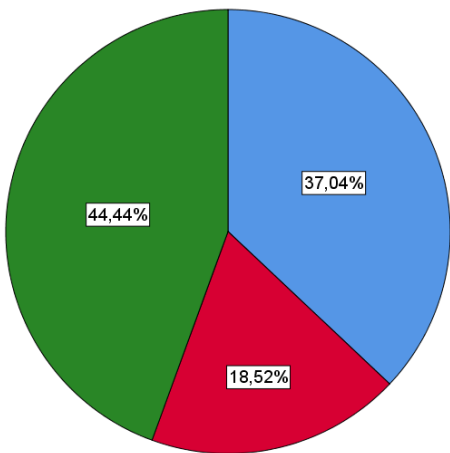




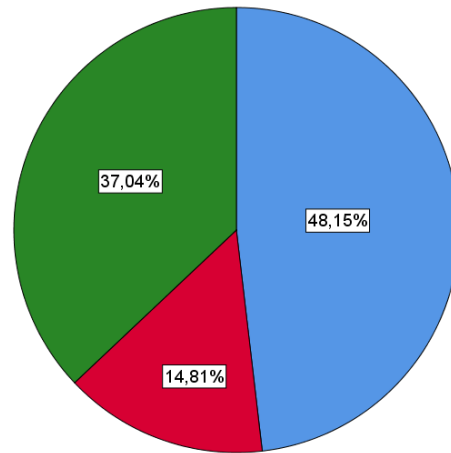
Sachbuch
 häufig
 selten
 nie



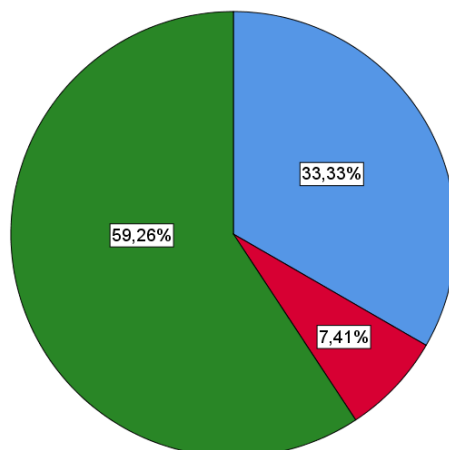
Biografie
 häufig
 selten
 nie



Bilderbuch
 häufig
 selten
 nie



Kinderbuch
 häufig
 selten
 nie



Jugendbuch
 häufig
 selten
 nie

